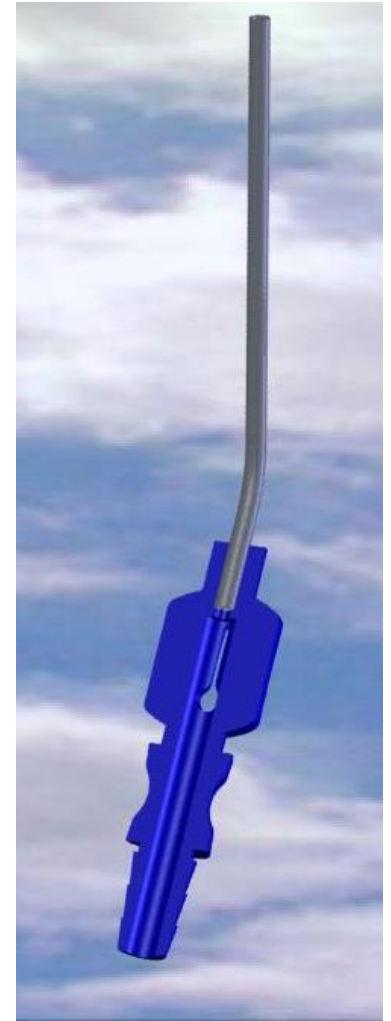
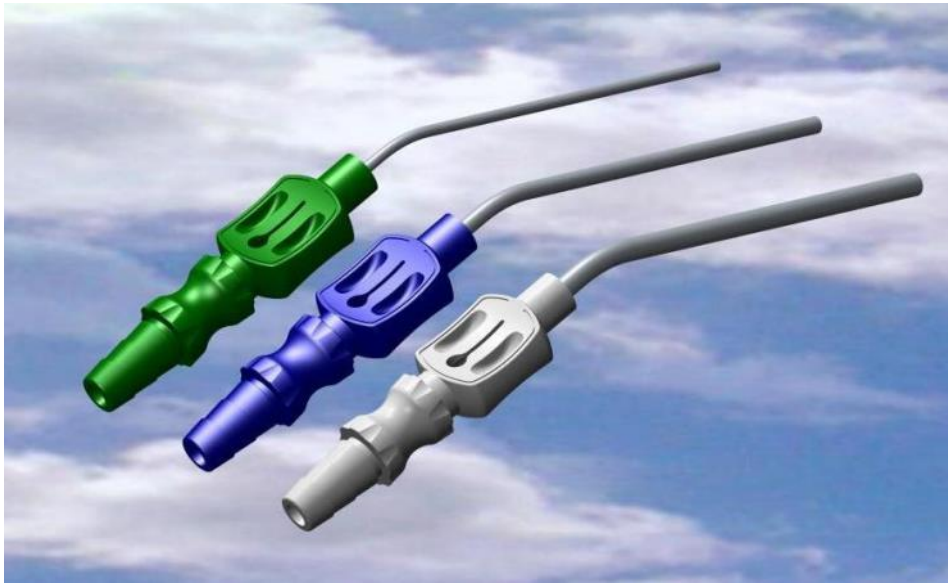


SIM MICRO CANNULA “Slow Reaction”

Steel suction cannula with drop-shaped suction control handle

Revision date: 04.06.2020



- By its drop shaped suction interrupter, FUKUSHIMA-Design suction cannula ensures excellent fine control of the suction power
- Rounded edges, atraumatic distal end of lumen
- Cannulae are made of Steel AISI 304
- Internal diameter is uniform over the entire length of the cannula
- Suction control handle made of copolymer styrene-butadiene (ABS)
- Matches all commonly used connection tubes
- Colour code for prompt recognition
- Latex free
- Sterilised by gamma radiation
- Double sterile peel packaging

Code	Internal Diameter mm.	External Diameter mm.	CH	Cannula length mm.	Handle colour	Pcs. per BOX
CSSR14G090*	0,96	1,4	4	90	WHITE	60
CSSR14G130*	0,96	1,4	4	130	WHITE	60
CSSR20G80*	1,45	2,0	6	80	GREEN	60
CSSR20G130*	1,45	2,0	6	130	GREEN	60
CSSR20G160*	1,45	2,0	6	160	GREEN	60
CSSR30G80*	2,54	3,0	9	80	BLUE	60
CSSR30G130*	2,54	3,0	9	130	BLUE	60
CSSR30G160*	2,54	3,0	9	160	BLUE	60
CSSR40G80*	3,0	4,0	12	80	WHITE	60
CSSR40G130*	3,0	4,0	12	130	WHITE	60
CSSR40G160*	3,0	4,0	12	160	WHITE	60

*Product not in stock, available by specific request



Manufactured by:



Via Gramsci, 9 - 40018 San Pietro in Casale (BO) - Italy
 Tel. +39 051.817902 +39 051.817850 Fax +39 051.817845
 www.simitalia.it www.medeurope.eu
 E-Mail: info@medeurope.eu

Distributed by:

